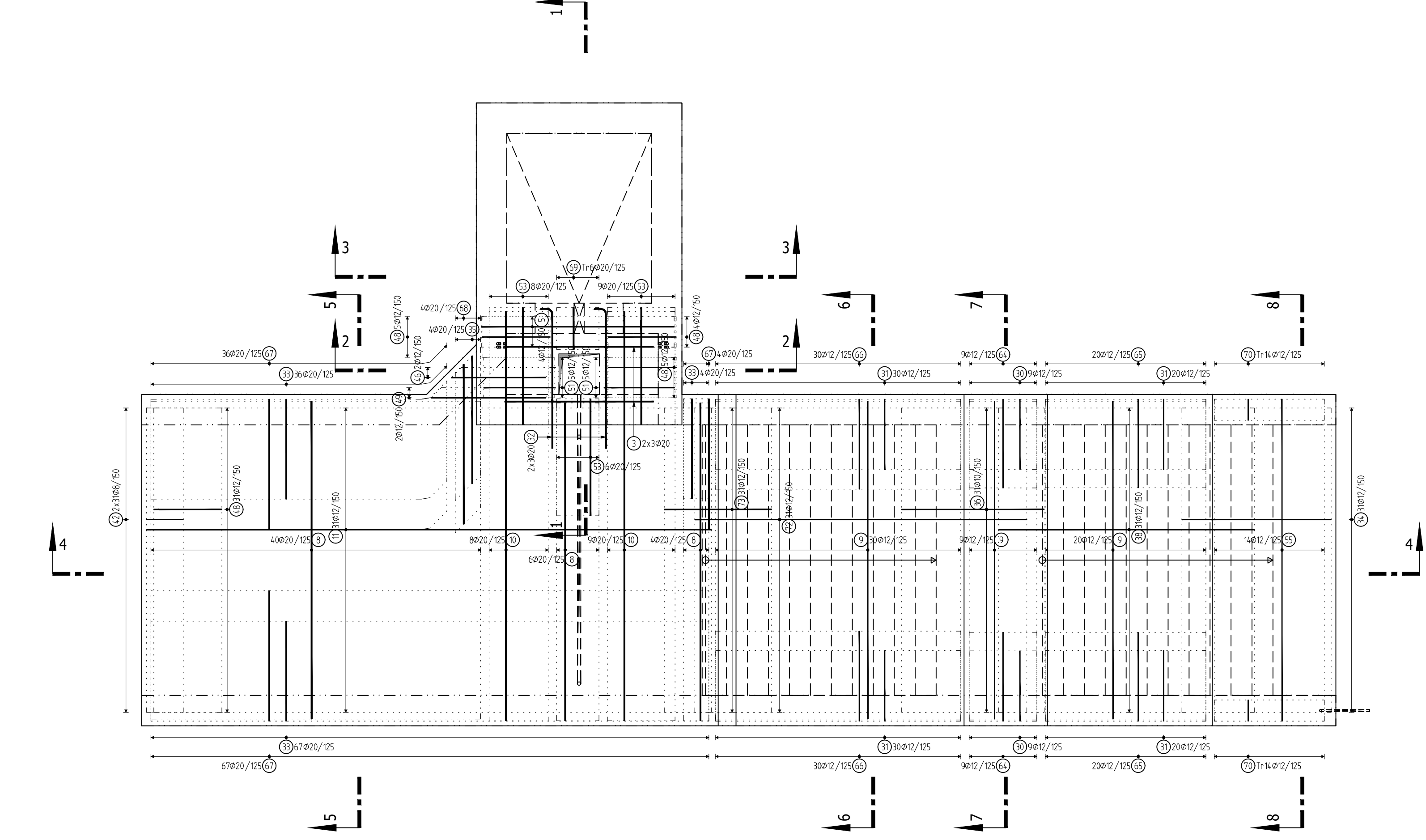
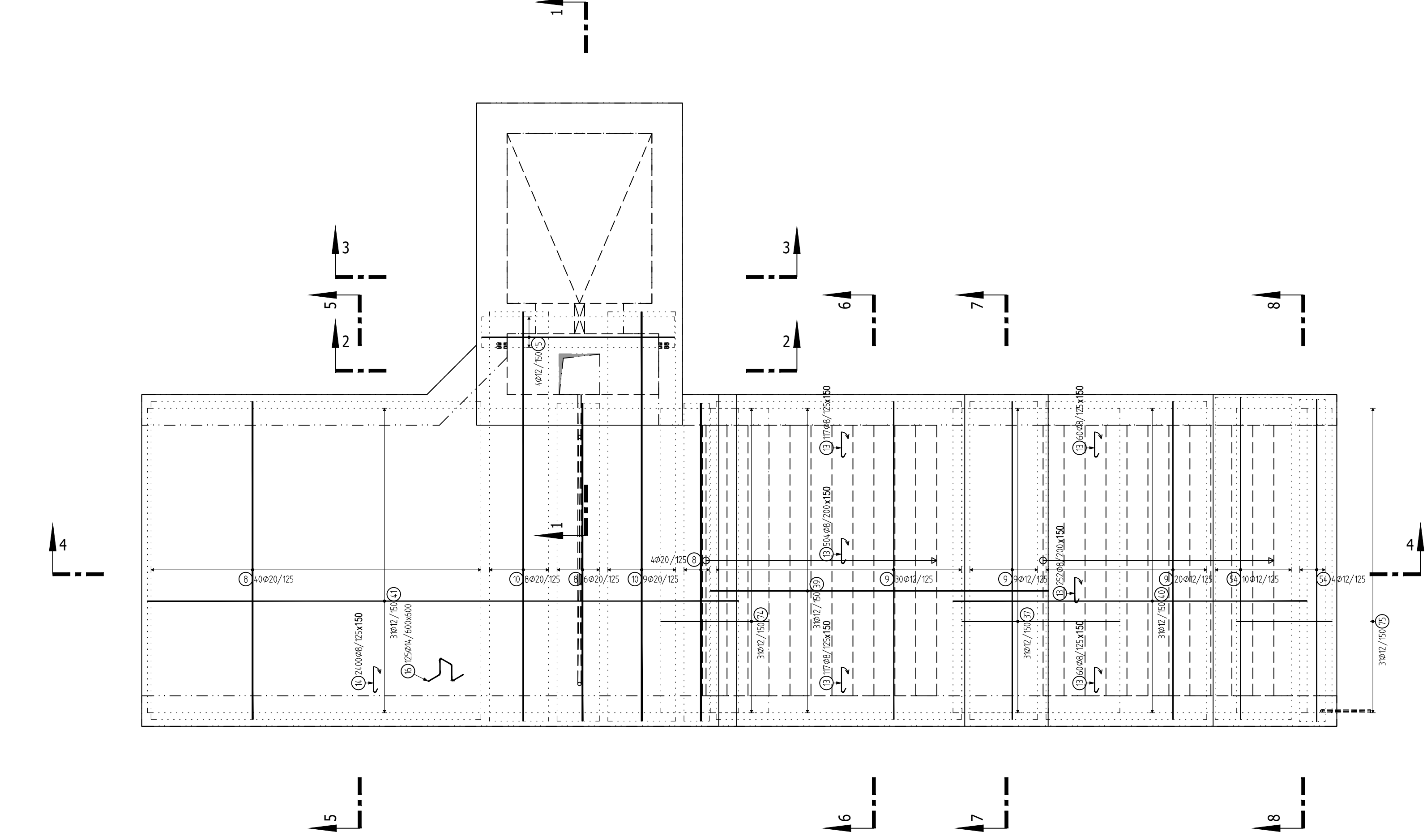


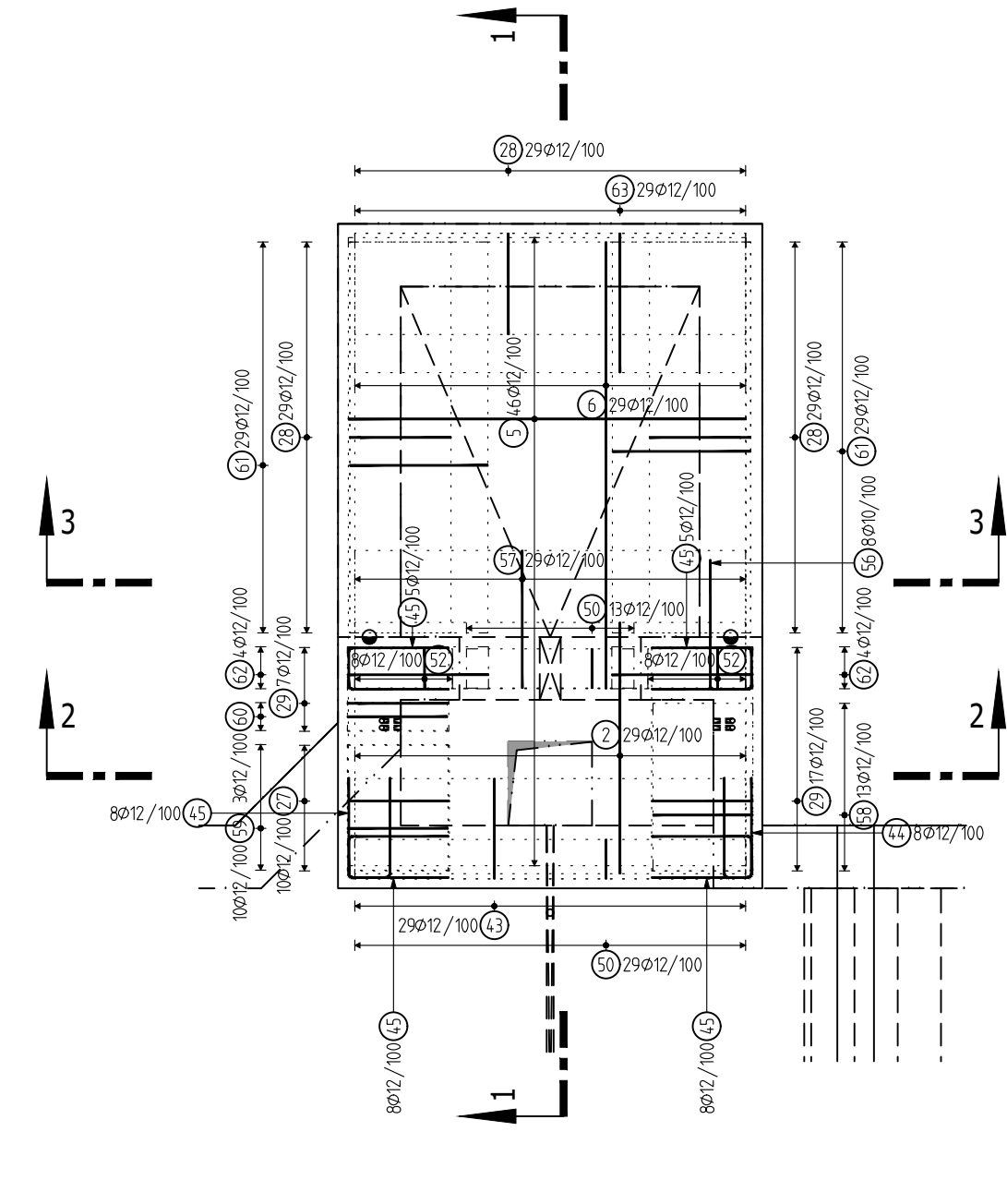
TUBUS - ZÁKLADOVÁ DESKA - VÝTUŽ SPODNÍ A LEMOVACÍ
PŮDORYS 1:50



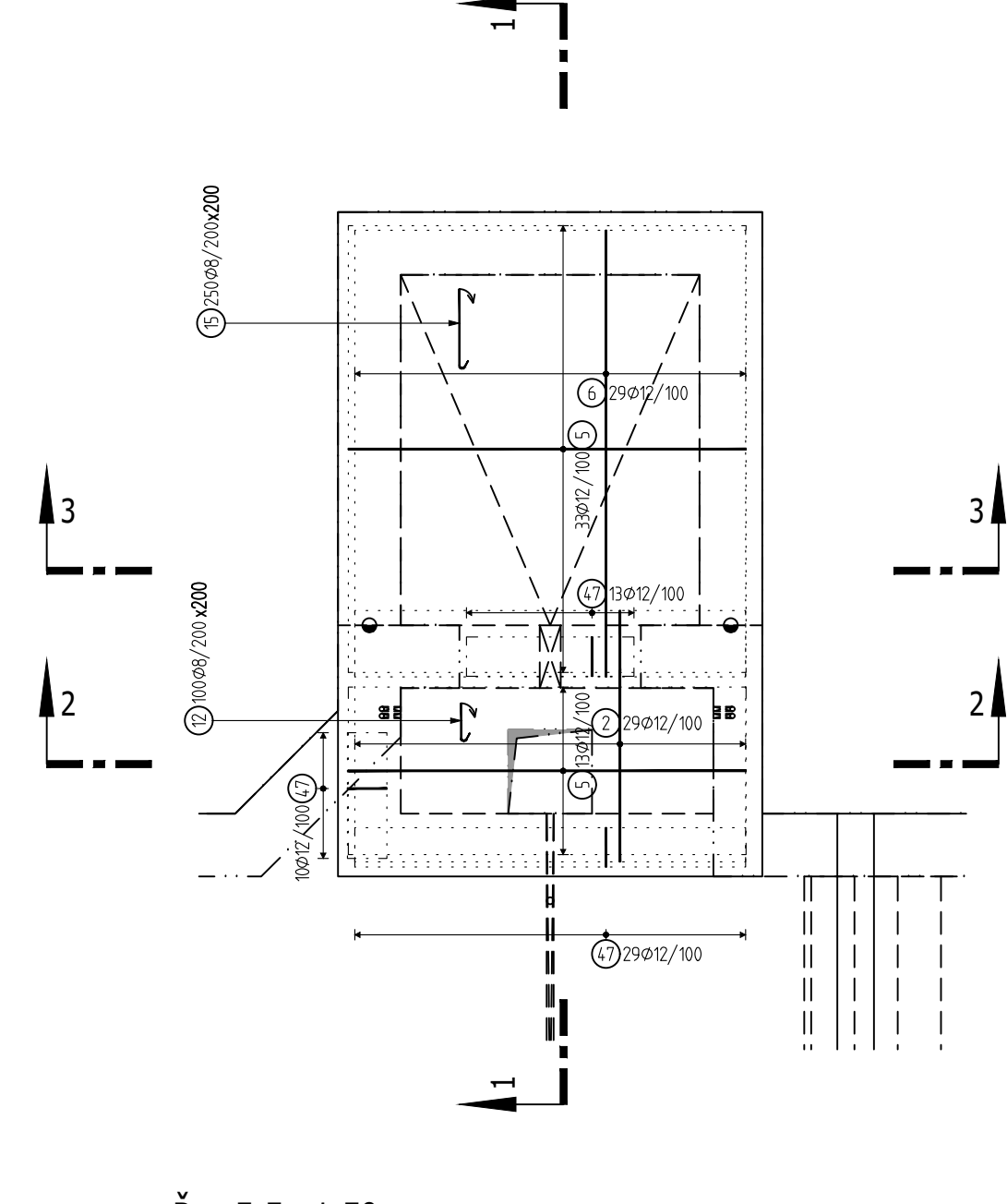
TUBUS - ZÁKLADOVÁ DESKA - VÝTUŽ HORNÍ A SMYKOVÁ
PŮDORYS 1:50



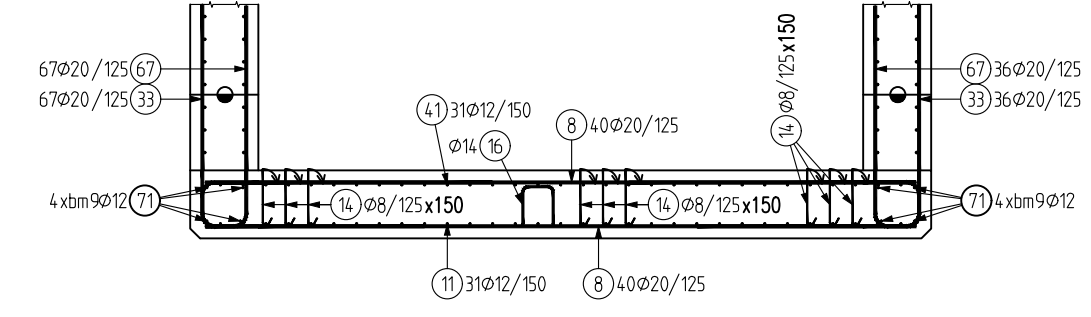
TUBUS - DNO ŠACHET - VÝTUŽ SPODNÍ A LEMOVACÍ
PŮDORYS 1:50



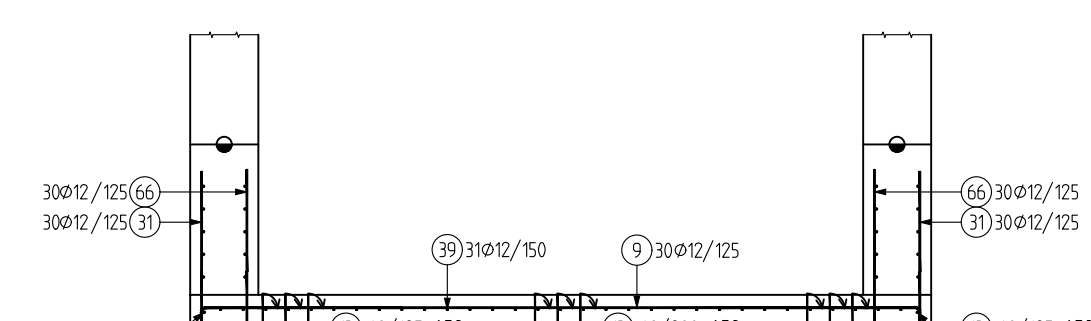
TUBUS - DNO ŠACHET - VÝTUŽ HORNÍ A SMYKOVÁ
PŮDORYS 1:50



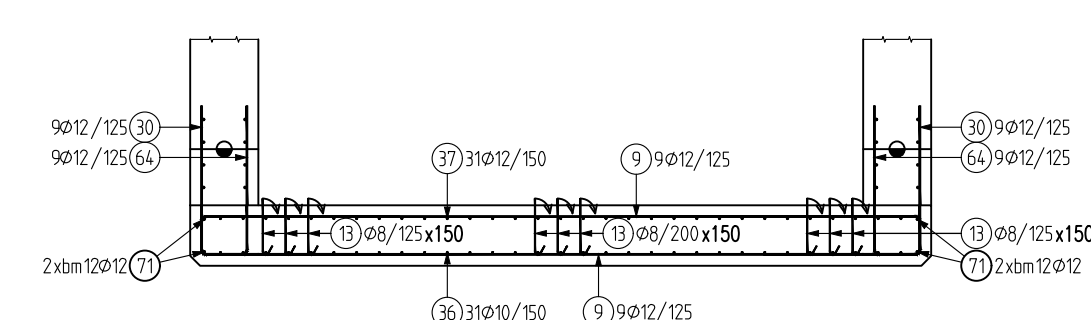
Řez 5-5 1:50



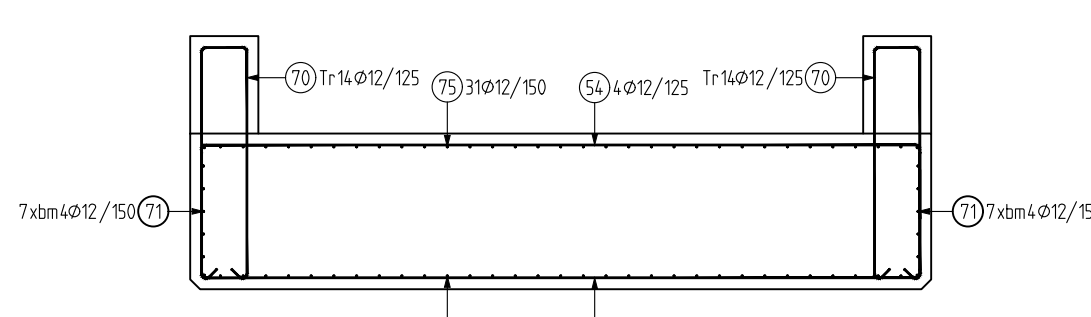
Řez 6-6 1:50



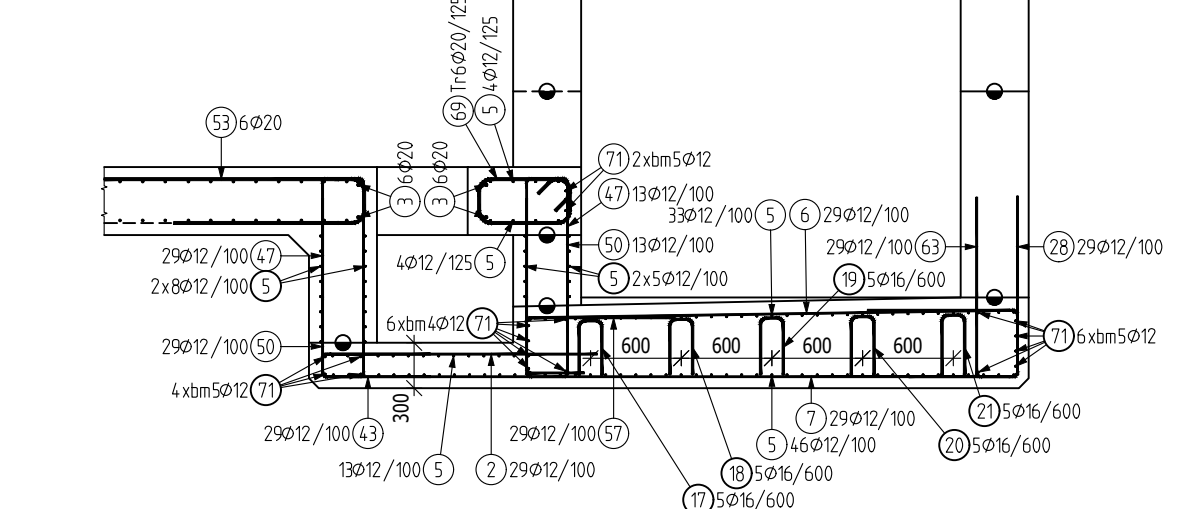
Řez 7-7 1:50



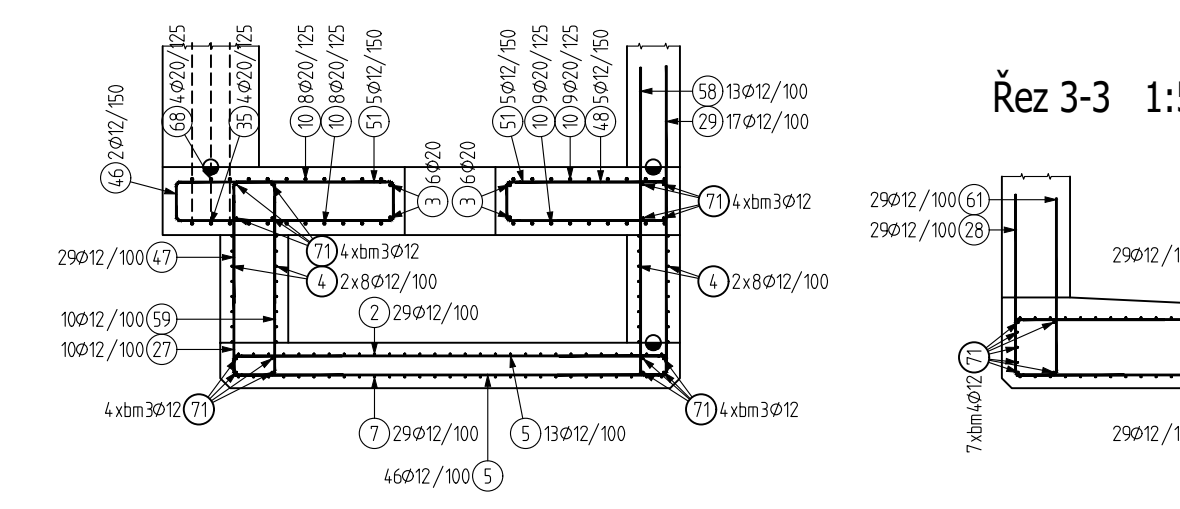
Řez 7-7 1:50



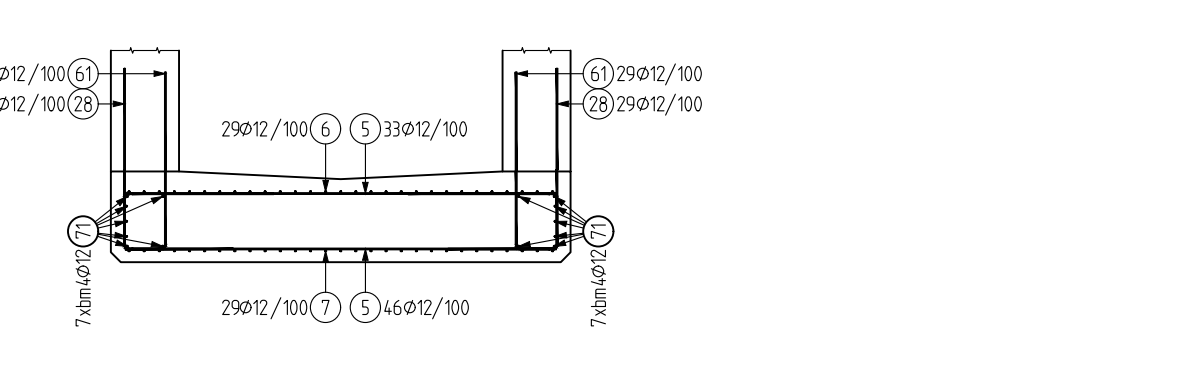
Řez 1-1 1:50



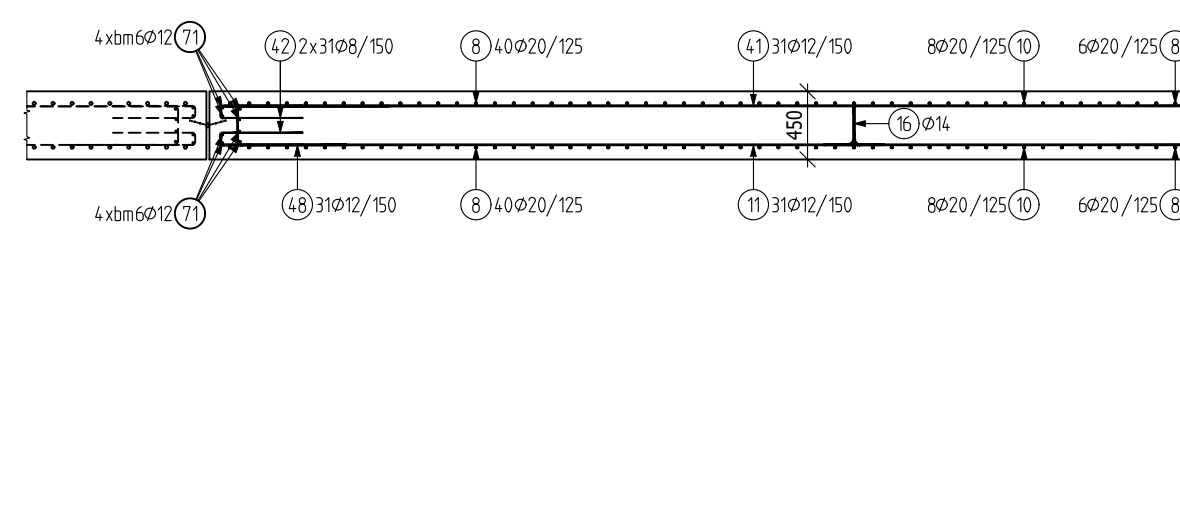
Řez 2-2 1:50



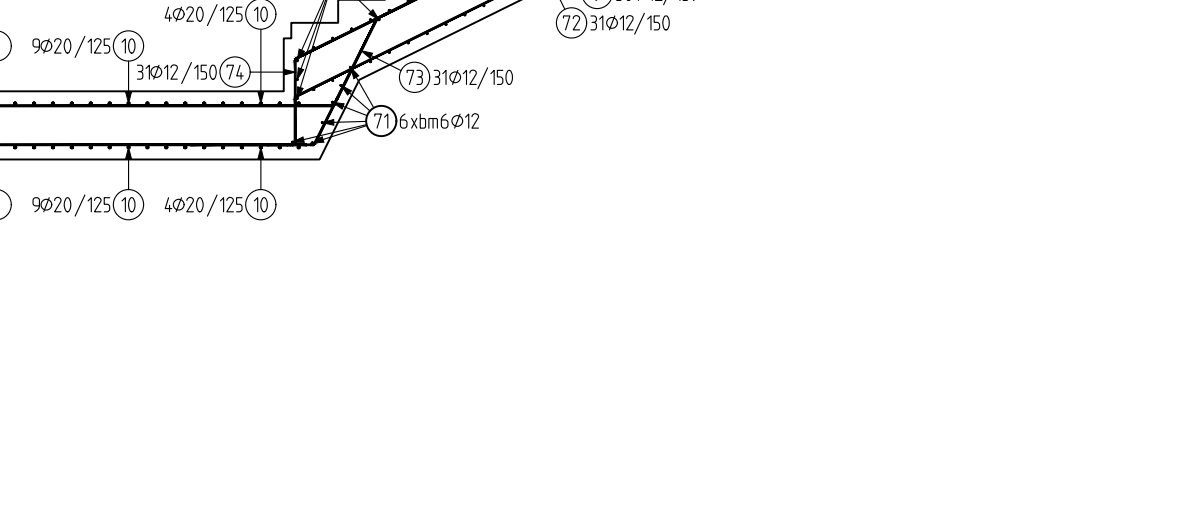
Řez 3-3 1:50



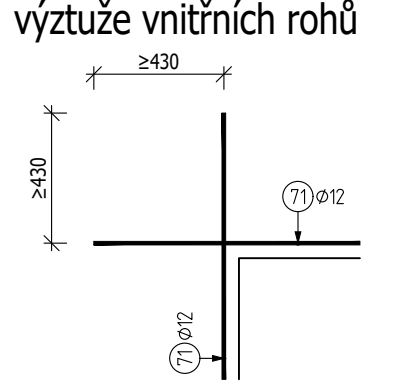
Řez 4-4 1:50



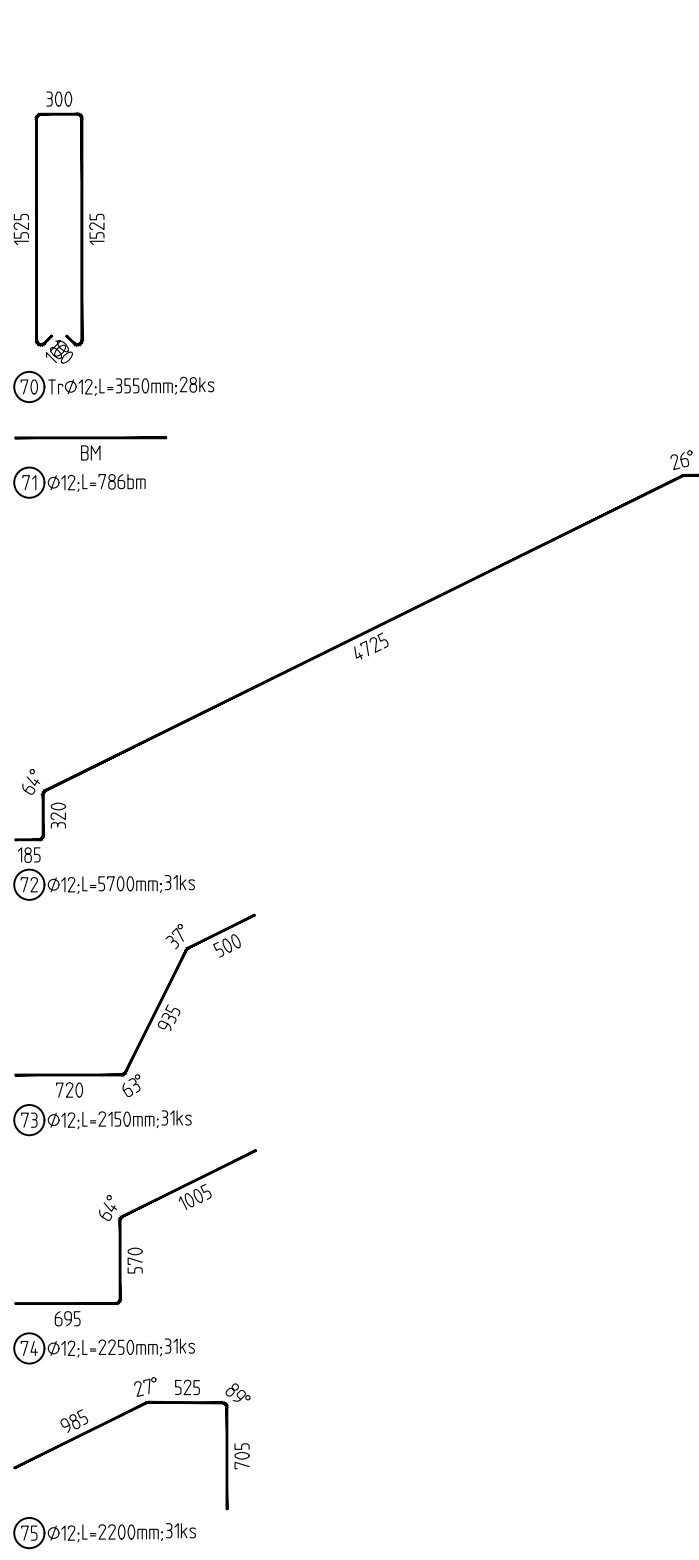
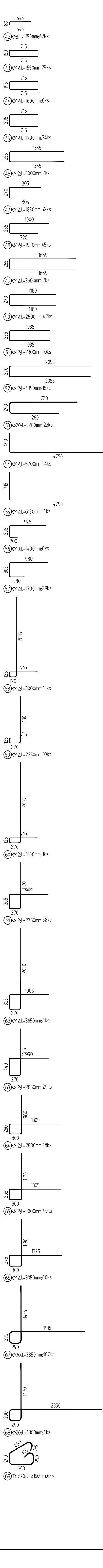
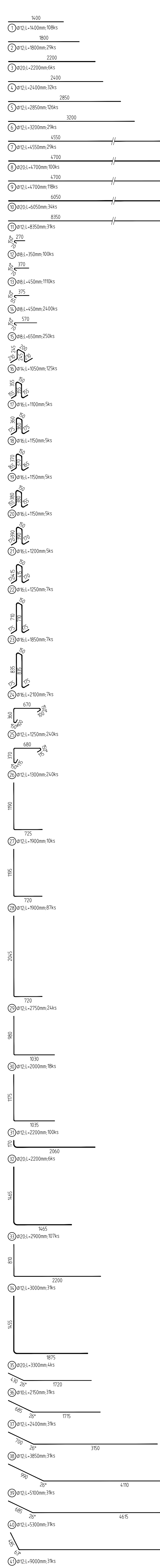
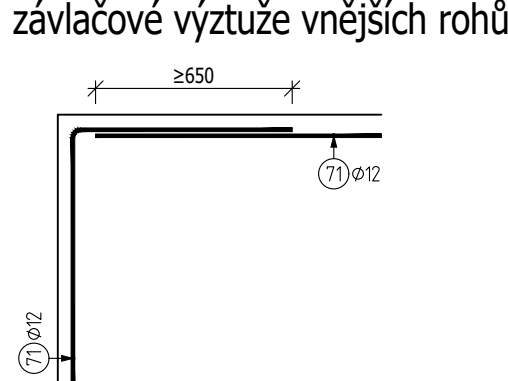
Řez 4-4 1:50



Typové přesahy závlačové
výztuže vnitřních rohů



Typové stykování přesahem
závlačové výztuže vnějších rohů



Číslo	Popis	Číslo (m)	TL desky
1	UTH 210	37	400 mm
2	UTH 200	18	300 mm
3	UTH 110	6	300 mm

NAZAR VYTULZE			50													
Pol	Prof i l	De lka [m]	ks	8	10	12	14	16	20							
1	50	12	1400	108												
2	50	12	1800	99												
3	50	12	2200	6												
4	50	12	2400	9												
5	50	12	2800	126												
6	50	12	3200	126												
7	50	12	3600	126												
8	50	12	4000	100												
9	50	12	4400	100												
10	50	12	4800	100												
11	50	12	5200	31												
12	50	8	3500	10	35	0										
13	50	8	4500	10	4995	5										
14	50	8	4500	1080	0											
15	50	8	650	250	162	5										
16	50	16	1080	16												
17	50	16	1100	5												
18	50	16	1120	5												
19	50	16	1150	5												
20	50	16	1150	5												
21	50	16	1200	5												
22	50	16	1250	7												
23	50	16	1300	7												
24	50	16	2100	7												
25	50	12	1250	540												
26	50	12	1400	240												
27	50	12	1500	87												
28	50	12	1600	10												
29	50	12	2750	24												
30	50	12	3000	18												
31	50	12	3200	100												
32	50	12	3200	6												
33	50	12	3200	6												
34	50	12	3200	6												
35	50	12	3200	6												
36	50	12	2150	31												
37	50	12	2400	4												
38	50	12	2850	4												
39	50	12	3850	4												
40	50	12	5100	31												
41	50	12	5300	4												
42	50	12	5300	4												
43	50	12	9000	31												
44	50	8	1150	66												
45	50	12	1350	29												
46	50	12	1600	8												
47	50	12	1850	26												
48	50	12	1900	4												
49	50	12	3600	2												
50	50	12	3600	2												
51	50	12	3600	2												
52	50	12	4250	23												
53	50	12	4700	14												
54	50	12	5700	14												
55	50	12	6150	14												
56	50	10	1400	8												
57	50	12	1700	19												
58	50	12	3000	38												
59	50	12	6250	10												
60	50	12	3100	9												
61	50	16	2750	58												
62	50	12	3650	69												
63	50	12	6800	29												
64	50	12	8800	29												
65	50	12	10500	6												
66	50	12	3050	60												
67	50	12	3850	107												
68	50	12	4000	6												
69	50	12	2150	6												
70	50	12	3500	6												
71	50	12	8	99												
72	75	12	5150	31												
73	75	12	5150	31												
74	75	12	2250	31												
75	75	12	2300	31												
CELKOVÁ DELKA				(m)	1848	3	77	9	131	3	65	2	154	3		
HMOTNOST				[kg]	729	4	80	6	566	6	158	6	102	8	3801	0
CELKOVÁ HMOTNOST				[kg]											10500	0